



ArenaConsultants

Aesthetical Functional and Sustainable Lab Designs

301, Nakshatra Heritage, Near Times Of India Office, Thane (West), 400 602. India.
+91-22-25373854 | admin@arenaconsultants.net | www.arenaconsultants.net





ABOUT US



Arena Consultants is an experienced, matured and enthusiastic firm dedicated to the pursuit of design excellence and professional service. We are Laboratory Design Consultants having focus exclusively on planning and designing of Laboratory facilities for industry, healthcare, research and education.





ABOUT ARCHANA SALIL

Director & Principal Architect:

Archana has an industry experience of more than 25 years and has been trained to work in design oriented environment with reputed firms in Mumbai. Before setting up the company, she did Masters in Construction Project Management from London South Bank University, UK and was the award winner for the best performance in the course.

Participation in:

- Laboratories for the 21st Century (Labs 21) 2012 Annual Conference
- Fundamentals of Planning and Design of Bio containment Labs conducted by Trade-line Inc, (6 hours for HSW credit)
- Laboratory Design: The Basics and Beyond conducted by ASHRAE

Education & Accreditation:

B.Arch (Bachelor of Architecture)

L.S. Raheja School of Architecture

MSc Construction Project Management

London South Bank University, UK

Registered Architect

Council of Architecture

Associate Member

Indian Institute of Architects

Associate Member

Indian Institute of Interior Designers

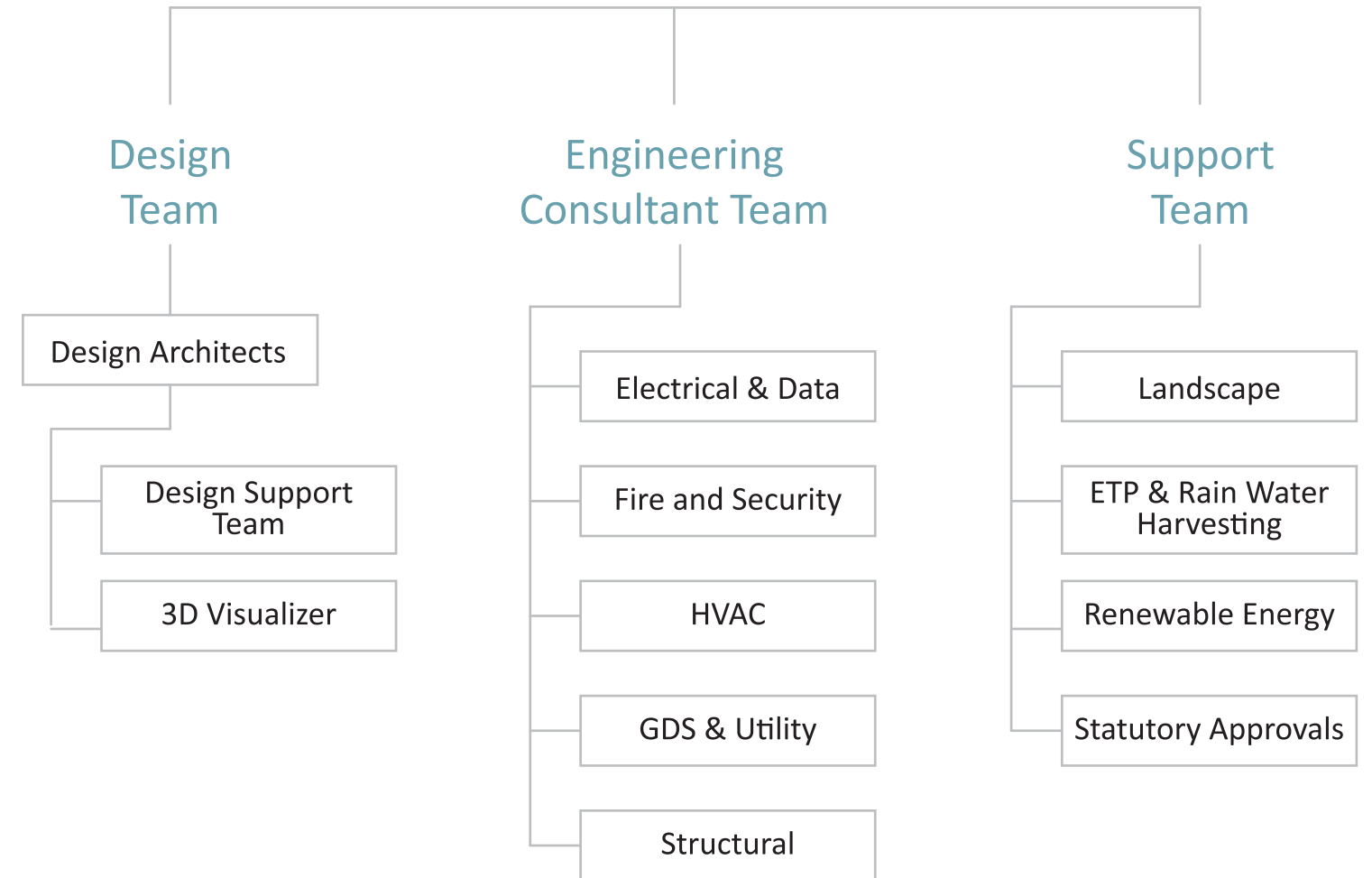




OUR TEAM

ARENA CONSULTANTS

Founder & Principal Architect
Archana Salil



OUR STRENGTHS

- Aesthetical

We carefully and consciously select the materials and colours to be used in labs. Glass and graphics form the most vital elements of our designs. Thus our designs reflect the nature of business the company runs and also enriches the working environment.



- Functional

Our designs are highly functional since we understand the user & laboratory infra-requirements, the complexity involved in such projects. The spaces are designed to be ergonomic, safe and flexible so that the user can adopt 'plug and play' methodology in the lab.

- Sustainable

We adopt Green Building approach by way of proposing energy saving and energy conservation concepts. Our designs are based on climatology, thus using lot of daylight for lighting of spaces as well as for solar power. Recycle & Reuse philosophy is encouraged by reusing treated waste water for flushing and garden watering. Engineering & technology is used at its optimum by recommending optical sensors, VAV and such other systems.



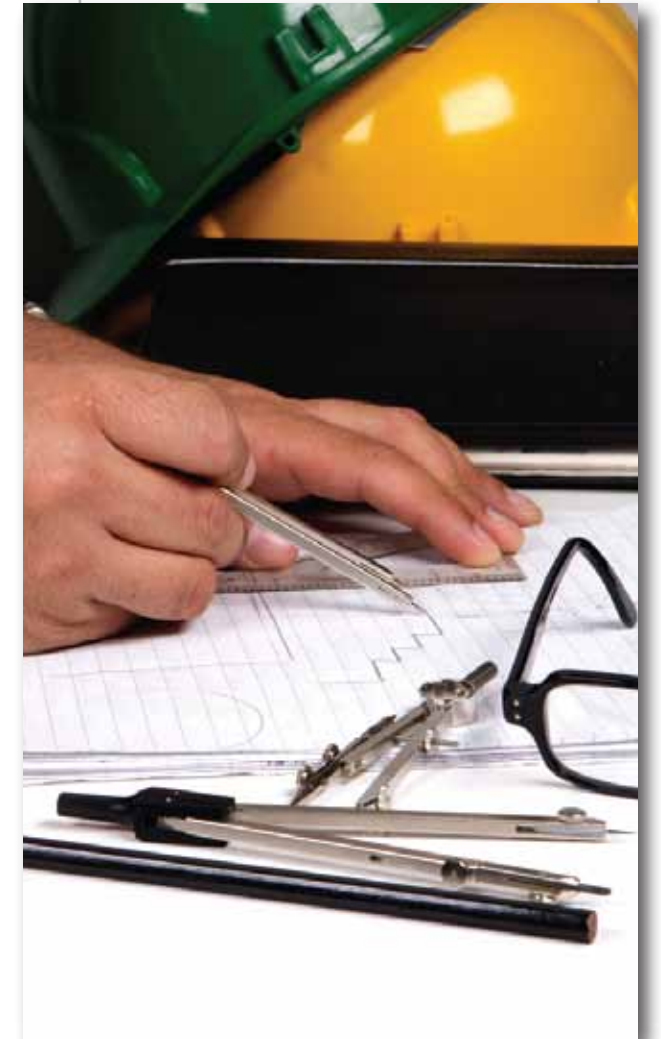
OUR SERVICES

Planning & Designing

- Understanding client requirements
- Laboratory planning & designing as per GLP norms, company EHS standards and global standards
- Preparation of working drawings for all streams viz. civil interior, electrical, HVAC, fume hood, lab furniture, plumbing and utility lines
- Material selection & specifications
- Preparing 3D views to explain the concept
- Preparation of bill of quantity
- Preparation of tender documentation & negotiations
- Contractor / vendor selection

Project Management

- Conducting project kick off meeting
- Coordination with client and all contractors
- Project scheduling
- Monitoring of process adherence on site
- Quality check on material used on site
- Ensure good workmanship
- Contractor's bill checking
- Snag list and virtual completion stage
- Facilitation of handing over of as built drawings from respective vendors



Express Pharma magazine articles:

- Laboratory facilities for the future
November 1-15, 2014
- Accident analysis
May 1-15, 2013
- Archi-take on laboratory furniture
July 1-15, 2011
- Basic architectural design considerations for a laboratory
February 16-28, 2010
- Lab designing & planning - an architect's perspective
August 16-31, 2009

Design Inn magazine:

- Featured project in July 2010 edition

E-Letter published on ISPE website:

(International Society for Pharmaceutical Engineering)

- Basic architectural design considerations for a laboratory

Architecture Update magazine:

- Best commercial project for the year 2008



OUR DESIGN STANDARDS

Indian Standards:

- GLP - National Good Laboratory Practices Guidelines
- NBC - Building Codes 2005
- NABL - Accreditation Board for Testing and Calibration Laboratories
- ECBC - Energy Conservation Building Code 2008
- IS Code - IS 15105 (wet sprinkler system), IS 2878 & IS 10204 (Fire extinguisher)
- FDA - Food and Drug Administration

US Standards:

- OSHA-USA - Lab Safety Practices
- ANSI / ASHRAE - Lab Ventilation
- ANSI / ISEA Z358.1-2014 - Emergency Eye Wash and Shower Equipments
- ASHRAE 62.1 – 2010 - Indoor Air Quality
- SEFA - USA (SEFA 1 to SEFA 10) - Lab furniture & Fume Hood
- NFPA - Electrical Codes, Fire Protection and Extinguishers, Fire Alarm and Signaling Codes, Wet Sprinkler System, Life Safety Code
- ASTM International - American Society for Testing and Materials

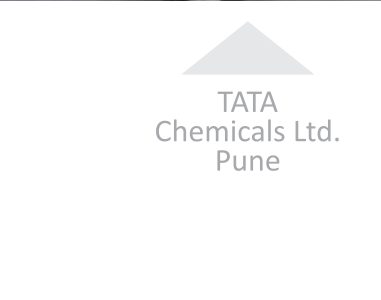







European/DIN Standards:

- BGI/GUV-I 850-0 Laboratories
- TRGS 526 Laboratories
- DIN/EN 15154 Safety emergency showers
- DIN/EN 14175 Fume cupboards
- DIN/EN 14470 Fire resistance storage cabinets



OUR
PRESTIGIOUS
CLIENTS

Chemicals	Bio-Pharma	FMCG	Government Institutes	Other
Dow Corning Pvt. Ltd. Mumbai	Ipca Laboratories Pvt. Ltd. Mumbai	Tata Chemicals Pvt. Ltd. Pune	BARC Mumbai	Infexn Laboratories Pvt. Ltd. Thane
Huntsman International (India) Pvt. Ltd. Mumbai	Aastrid Life Sciences Pvt. Ltd. Navi Mumbai	Imsofer Manufacturing India Pvt. Ltd. Pune	Indian Institute of Integrative medicines Srinagar	Honeywell Pvt. Ltd. Bangalore
Archroma India Pvt. Ltd. Thane	Wanbury Pvt. Ltd. Navi Mumbai		NIPER Gandhinagar	
Aarasan Chemicals Pvt. Ltd. Dombivli	Goldores India Pvt. Ltd. Mumbai			
Kairav Chemofarbe Pvt. Ltd. Navi Mumbai	Bharat Serums & Vaccines Ltd. Navi Mumbai			
Dow Chemicals International Pvt. Ltd. Pune				
Clariant Chemicals (India) Pvt. Ltd. Navi Mumbai				
Archroma India Pvt. Ltd. Thane				



Dow Corning Pvt. Ltd.
Mumbai

TATA Chemicals Ltd.
Pune



VALUABLE TESTIMONIALS

Our Satisfied Clients

“We are pleased and happy to say that we were right in appointing ‘Arena Consultants’ as our ‘Laboratory Architects’. This facility is meant for 5 divisions of Huntsman group admeasuring an area of 60,000 sft. The scale was one of its kind in Mumbai with diverse and complicated requirements. Yet the manner in which the layouts were prepared, displayed the efficiency and design skills of a Laboratory planner. Their work reflected their capability, in-depth knowledge and work experience that Arena Consultants carry. They were flexible & proactive and came up with multiple solutions as and when required. Our visions for this project matched. The detailing and specifications laid out by them were clear and specific with no compromise approach. They showed an attitude and responsibility to go an extra length to get the things in right manner.”

Kurt Girod
Project Director
Huntsman
International (India)
Pvt. Ltd.

Dr Dileep Wakankar
Head Product
Stewardship Asia
Archroma
India Pvt. Ltd.

“I came in contact with Archana when she was working on the designing of Archroma Product Stewardship Laboratory on the 11th floor at MBC Park, Thane. She is knowledgeable and excellent in conceptualization. She is quick to grasp the needs and translate them into effective layouts. She is fun to work with and speedy in her responses. She is a patient listener and very cooperative and understanding.”

“Archana has excellent knowledge about the subject and architecture wise she is good in lab design. She is well focused while working in her domain. Overall supportive and can adapt to the changes if well explained and found convincing. Overall its excellent to work with her.”

Shahab Ahmad
Senior Manager
Jones Lang LaSalle



OUR WORK





Imsofer
Manufacturing
India Pvt. Ltd.
Pune

Clariant
Chemicals
(India) Pvt. Ltd.
Navi Mumbai

